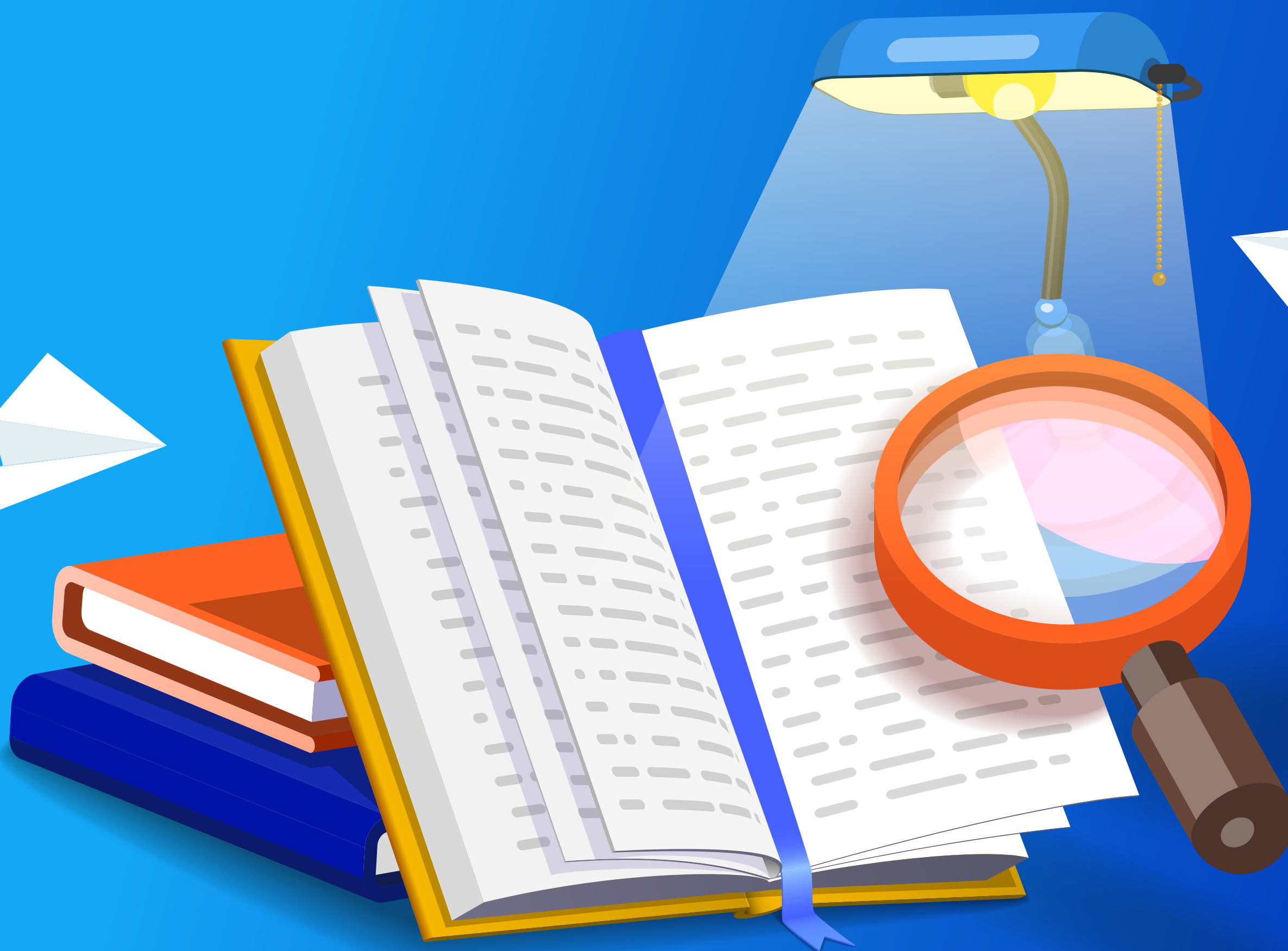


The Healthcare AI Dictionary: Vol. 1



01

AI Marketplace.

[ai-mar·ket-place] **noun.**



Helps simplify purchasing AI algorithms by offering a breadth of options in one location. This approach can present challenges with maintenance and installation since you buy individual components with their own requirements.

02

Algorithm.

[al-go-rithm] **noun.**

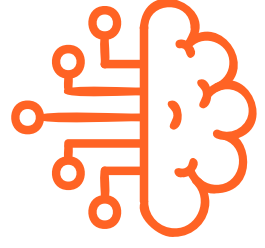


Algorithms are the instructions that power artificial intelligence. Most references to healthcare AI focus on complex algorithms that are intelligent, meaning they can learn, make decisions and problem solve.¹

03

Augmented Intelligence.

[aug-ment-ed-in-tel-li-gence] **noun.**



A human and artificial intelligence partnership that enhances “cognitive performance.”² For healthcare, this could mean the ability to quickly analyze and react to data and predictive modeling to aid in proactive patient care.

04

Clinical AI.

[clin-i-cal-AI] **noun.**



The segment of healthcare AI that specifically focuses on AI technologies used to improve patient outcomes. It incorporates different types of artificial intelligence (i.e. machine learning, deep learning, natural language processing, computer vision) to help enable better, faster and more accurate diagnostic and treatment decisions.

05

Healthcare AI.

[health-care-AI] **noun.**



An umbrella term that encompasses the many different forms of artificial intelligence used to support various health care functions. These could be administrative, financial, operational or clinical – from automated scheduling to virtual care assistants and supply chain management tools.

06

Connected System of Intelligence.

[con-nec-ted-sys-tem-of-in-tel-li-gence] **noun.**



Healthcare AI that effectively works within the entire health system (i.e. enterprise) instead of a single department or facility. This type of AI implementation offers a single platform, scalability, seamless integration, enhanced security and data-driven decision making.

07

Platform.

[plat-form] **noun.**



The system that enables other products or services to function. At Aidoc, our AI platform is the aiOS™, an operating system that works as the IT interface to connect and deploy all necessary systems and algorithms for enterprise-wide AI.

08

Point Solution.

[point-so-lu-tion] **noun.**



Offers diagnostic support and downstream care coordination for a specific pathology. Many health systems may start with a point solution, but it potentially narrows the ability to scale your AI investment to multiple departments or hub and spoke facilities.

The world of healthcare AI is vast and ever evolving. Stay current with the **latest trends and insights.**

aidoc

Sources: 1- Scott A. Difference Between Algorithm and Artificial Intelligence. Data Science Central. Published July 7, 2021. Accessed January 13, 2023. Available at: <https://www.datasciencecentral.com/difference-between-algorithm-and-artificial-intelligence/>. 2- Gartner Information Technology. Augmented Intelligence. Accessed January 13, 2023. Available at <https://www.gartner.com/en/information-technology/glossary/augmented-intelligence>.