

When does AI fall short?

There are many challenges healthcare AI can alleviate, but health systems often start with a solution that narrows the ability to scale an AI investment into multiple departments and use cases.

What to avoid when adopting an AI solution

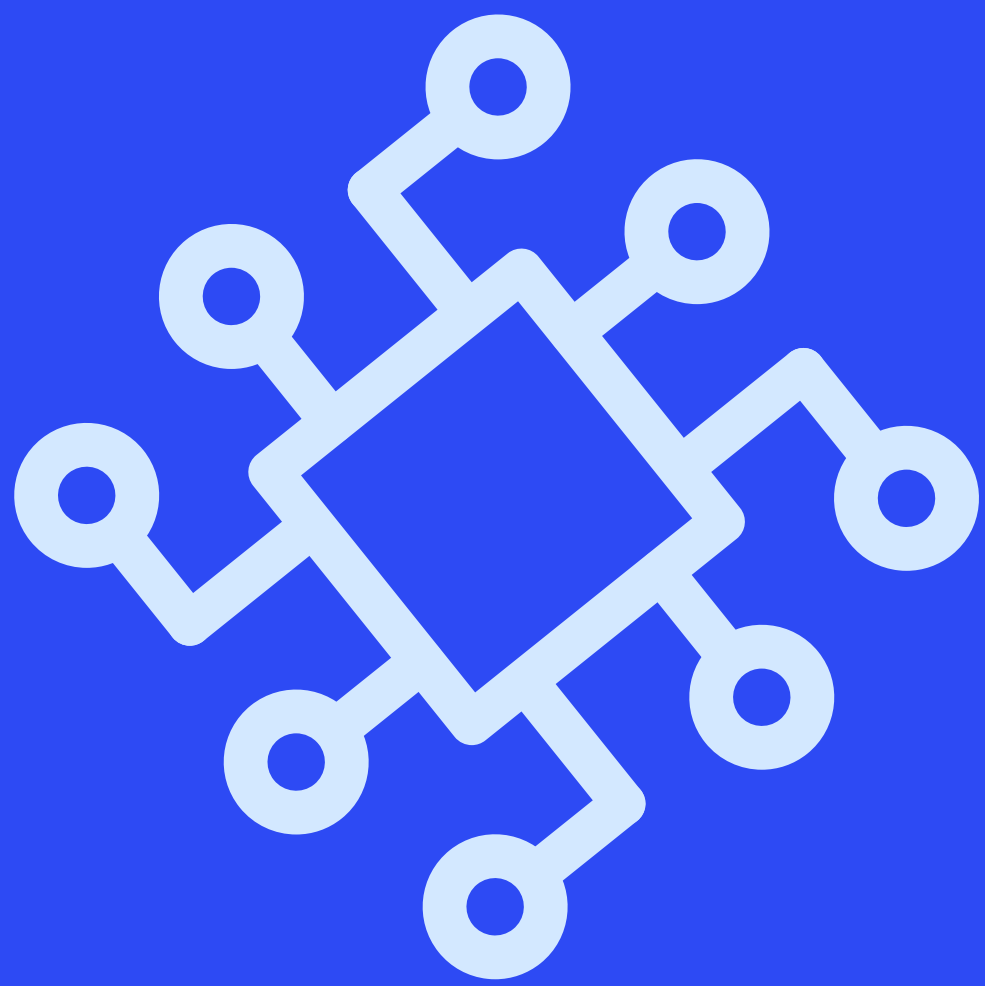
Point solutions
versus a platform



Siloed use cases
versus enterprise approach



Technology-focused versus
people and/or process-focused



Data metrics versus
measurable ROI



Want to learn how other facilities have taken their AI strategy enterprise-wide? Watch the full on-demand webinar, **The Journey Towards Enterprise: Scaling AI at Tufts Medicine.**

[View Webinar](#)