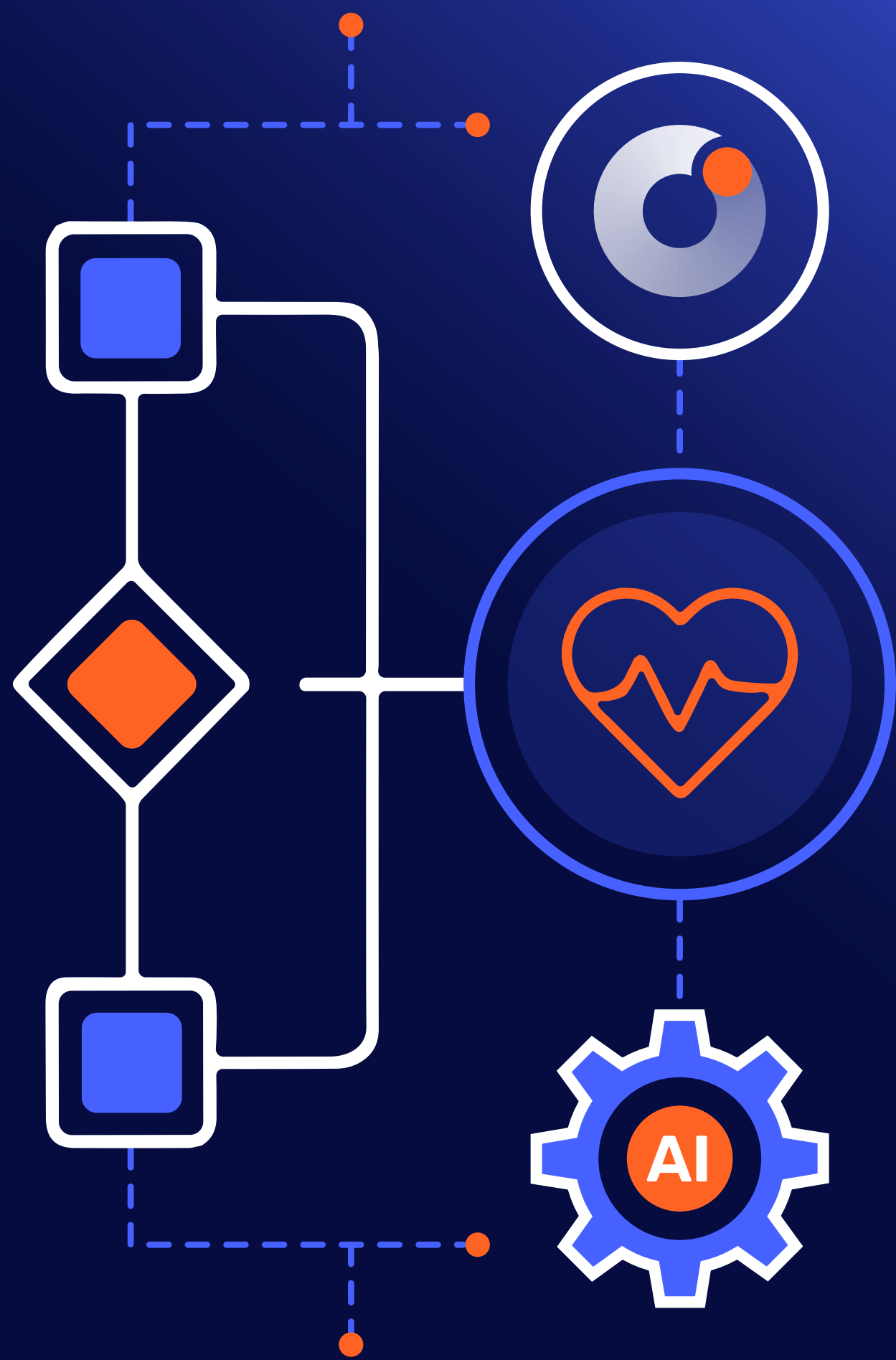


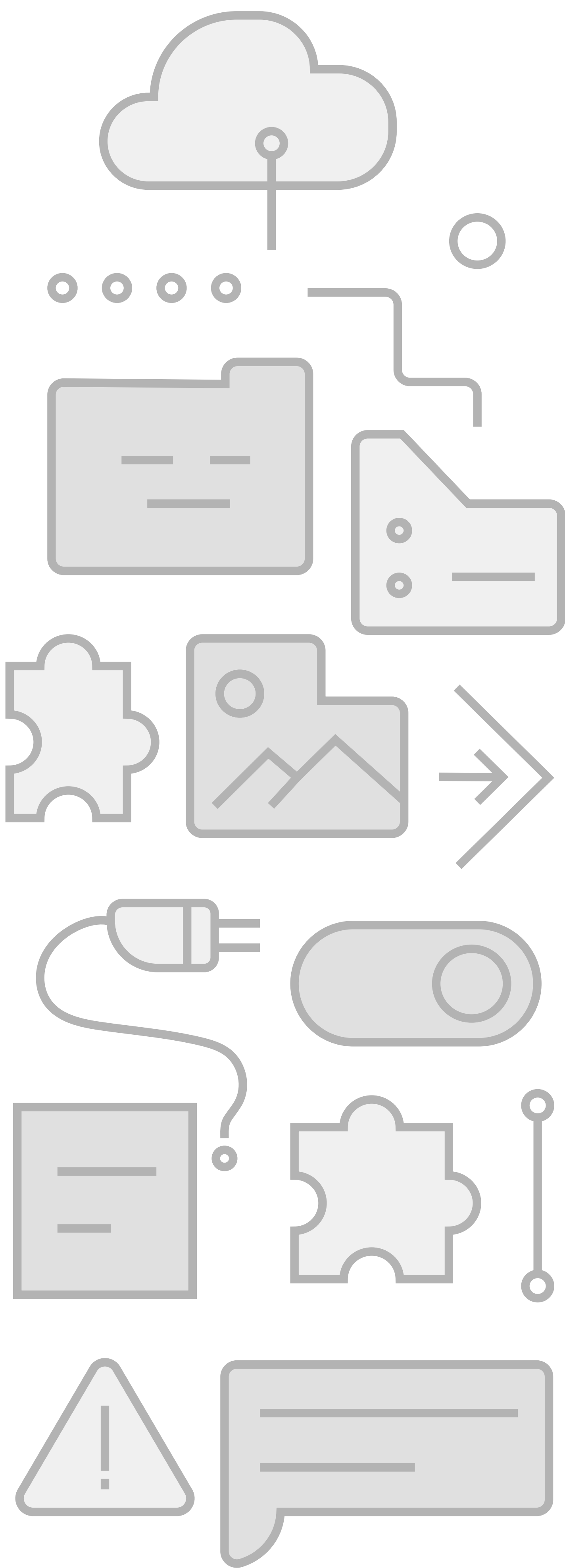


# Non-Negotiables of a True Clinical AI Platform

In a crowded AI market, marketplaces often pose as platforms. But only one of them is designed to scale, govern and embed AI across the health system. **Here’s what separates clinical-grade infrastructure from point solution patchwork.**



## Marketplace Patchwork



If it can’t govern, embed, scale or explain – it’s not a platform. **It’s a marketplace in disguise.**

Learn what real AI infrastructure looks like at [aidoc.com/aios](https://aidoc.com/aios).

## Clinical AI Platform

- 1. Built for Scale, Not Demo**  
Secure, high-performance infrastructure with optimal uptime, real-time processing and global compliance.  
*Marketplaces rarely own the operating system. Platforms are the operating system.*
- 2. Data That’s Unified and Trustworthy**  
One data lake. Clean pipelines. Version-controlled. ETL workflows optimized for clinical, imaging and unstructured inputs.  
*If it can’t harmonize your data, it can’t scale your AI.*
- 3. Interoperability That Actually Connects**  
Native integration with HL7, FHIR, DICOM, EHR, PACS, LIS and more.  
*No toggles. No delays. No fragmented insights.*
- 4. Enterprise AI Management**  
Manages onboarding, validation, deployment and monitoring – with drift detection and rollback controls.  
*Marketplaces sell models. Platforms ensure their performance.*
- 5. Embedded at the Point of Care**  
AI delivered inside clinician workflows, not in pop-ups or dashboards.  
*If you have to leave your system to use it, it’s not integrated.*
- 6. Governance You Can Trust**  
Bias tracking, override logging, audit trails and clinical sign-off workflows built in from day one.  
*Real platforms are governed like clinical tools.*
- 7. Explainability That Drives Action**  
Explainability features visual comparisons and role-aware outputs that build trust.  
*If AI can’t explain itself, it won’t – and shouldn’t – be used.*
- 8. Standards-Based, Not Siloed**  
Full support for healthcare vocabularies (SNOMED, LOINC, ICD-10) and protocols (FHIR, CDA, DICOM).  
*Marketplaces leave integration to vendors. Platforms own it.*
- 9. Compliance Ready, Always**  
FDA, CE Marked, ISO-compliant from development to post-market. Documentation ready for inspection.  
*Regulation isn’t an afterthought. It’s the foundation.*
- 10. Secured Like a Clinical System**  
Security designed for healthcare: access controls, data protection and zero-trust architecture.  
*If it can’t protect PHI, it doesn’t belong in healthcare.*
- 11. Scales Across the Enterprise**  
Modular and specialty-agnostic, with governance and workflows that flex across sites, service lines and priorities.  
*Platforms scale clinically, operationally and commercially – not just technically.*