

AI WORKSHOPS

AI PATH PROGRAM

AI PATH WORKSHOPS

Tailored Training for Optimal Impact

GUIDING HEALTHCARE FACILITIES ON A PATH TO HARNESS AI'S POWER

Aidoc is your experienced partner in unlocking AI's potential, providing solutions, tools, workshops and training for best practices in AI adoption, transparency and scalability. Together, we can navigate healthcare's AI revolution, ensuring impactful change for patients and your organization. The AI PATH program focuses on four core tenets:



Partnership

Partnership approach involves collaborating with Aidoc to tailor AI solutions to your health system's IT stack and needs, ensuring seamless integration and maximizing AI's potential for improved patient outcomes.



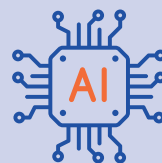
Advocacy

Champions the adoption of AI, working alongside your facility to raise awareness, drive policy changes and promote the ethical and responsible use of AI for better patient care.



Train

Training component offers comprehensive workshops and resources to empower your team with the knowledge and skills needed to effectively adopt, implement and scale AI solutions, driving positive outcomes for your facility and patients.



Harness AI

Harnessing AI focuses on leveraging Aidoc's expertise to optimize AI integration. This provides your facility with cutting-edge tools and strategies to unlock AI's full potential, ultimately leading to transformative advancements in healthcare delivery and patient care.



Advance Your AI Strategy: Tailored AI PATH Workshops for Your Team's Unique Needs

AI PATH Workshops are dynamic, interactive sessions designed to delve into the crucial aspects of AI implementation in healthcare. Customized to your team's specific needs and objectives, these brand-agnostic workshops offer invaluable insights to enhance your AI journey.

Our sessions cover a range of pertinent topics, including:



Understanding the current landscape of AI in healthcare



Demystifying complex AI concepts for practical application



Measuring the impact and effectiveness of AI solutions



Exploring the clinical implications and benefits of AI



Navigating the regulatory and governance aspects of AI in healthcare

Interested in scheduling an AI Path workshop?
Visit [Aidoc.com/AIPath](https://www.aidoc.com/AIPath) for more information

COMMON QUESTIONS ABOUT AI PATH WORKSHOPS

What is included in the workshop?

Our workshops provide comprehensive education on the selected topics, tailored to your organization's unique requirements. Facilitated by our experienced team, the sessions also feature open discussions to address your team's questions, concerns and strategies for advancing your AI initiatives. These workshops are ideal for aligning team members, establishing a robust AI framework or building a dedicated AI team within your organization.

How long do the workshops last?

Typically, our workshops span 1 to 2 hours, ensuring an in-depth exploration of the chosen topics while accommodating your team's schedules. However, the duration can be adjusted based on your specific needs and objectives, guaranteeing a highly personalized and impactful session.

Is there a cost associated with the workshop?

There is no cost for the workshop. Before scheduling, we'll connect with your team to understand your needs, focuses and priorities. We tailor our workshops to ensure they align with the program's goals, delivering the most impactful and relevant outcomes.

Who from my organization should attend the workshop?

Our workshops benefit a wide range of professionals involved in healthcare AI implementation. We recommend attendance from:

- Executives (e.g. CEO, CFO, COO, CMO, CCO, innovation, digital transformation, AI leadership) and decision-makers seeking to understand the strategic implications of AI in healthcare
- Clinical leaders interested in leveraging clinical AI to improve patient outcomes and operational efficiency
- IT leadership (CIO, CMIO) and professionals responsible for implementing and managing AI solutions
- Data scientists and analysts involved in developing and deploying AI algorithms
- Quality improvement and compliance officers focused on ensuring regulatory adherence
- Other key stakeholders invested in maximizing the benefits of AI in healthcare

Our workshops bring together a diverse group of attendees, fostering collaboration and alignment across different functions, ensuring a holistic and effective approach to AI implementation within your organization.